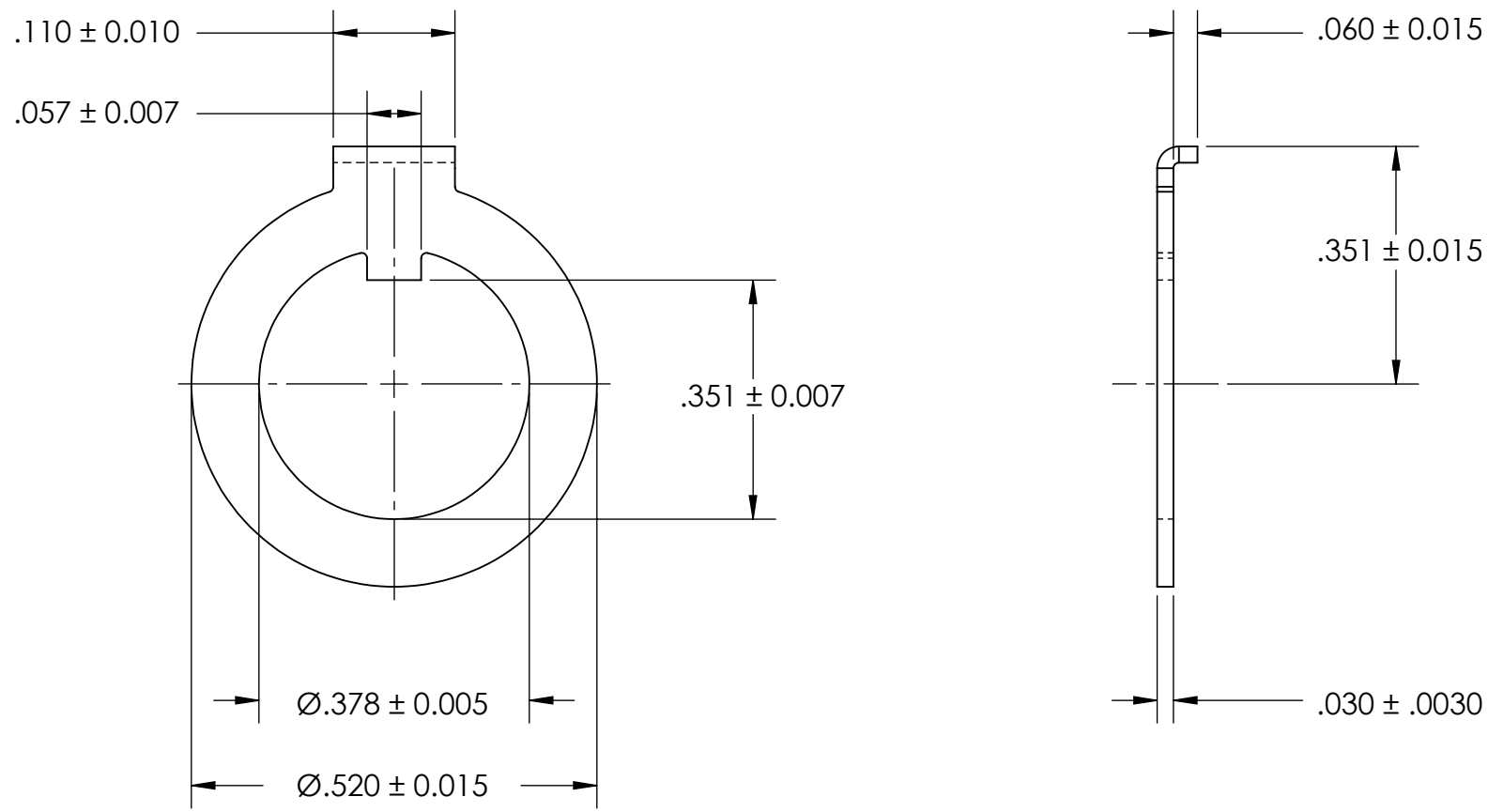


REFERENCE SEASTROM WORKMANSHIP STD. 8.4.1.W2



NOTES:

- 1. ZINC PLATE PER ASTM B633, SC1, TYPE III or V; Clear
- 2. DIMENSIONS APPLY BEFORE PLATING

PROPRIETARY AND CONFIDENTIAL
THE INFORMATION CONTAINED IN THIS DRAWING IS THE SOLE PROPERTY OF SEASTROM MANUFACTURING. ANY REPRODUCTION IN PART OR AS A WHOLE WITHOUT THE WRITTEN PERMISSION OF SEASTROM MANUFACTURING IS PROHIBITED.

DIMENSIONS ARE IN INCHES TOLERANCES: FRACTIONAL $\pm 1/32$ ANGULAR: MACH $\pm 1/2$ Deg TWO PLACE DECIMAL $\pm .01$ THREE PLACE DECIMAL $\pm .005$		NAME	DATE	SEASTROM MFG	
		DRAWN			
		CHECKED			
		ENG APPR.			
		MFG APPR.			
MATERIAL	COLD ROLLED STEEL	Q.A.		INTERNAL TAB FORMED KEY WASHER	
FINISH	SEE NOTE 1	COMMENTS:			
DRAWING IS NOT TO SCALE				SIZE	DWG. NO.
				A	5739-5-Z3
				REV.	-
				SHEET 1 OF 1	