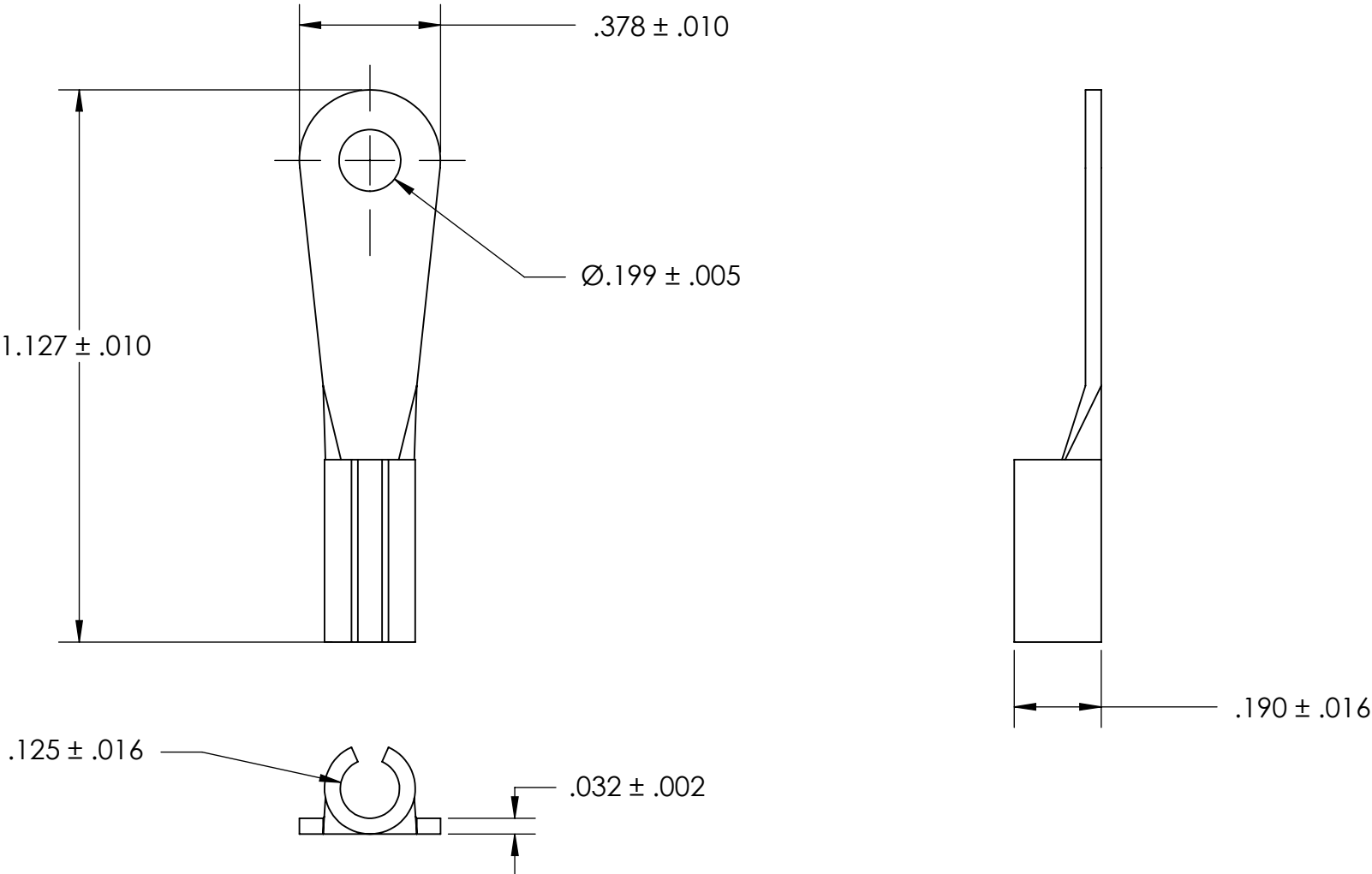


REFEERENCE SEASTROM WORKMANSHIP STD. 8.4.1.W2



NOTES

- 1. BRIGHT TIN PLATE PER ASTM B545, CLASS B
- 2. SCREW SIZE: 10
- 3. DIMENSIONS APPLY PRIOR TO PLATING.

**PROPRIETARY AND CONFIDENTIAL**  
THE INFORMATION CONTAINED IN THIS  
DRAWING IS THE SOLE PROPERTY OF  
SEASTROM MANUFACTURING. ANY  
REPRODUCTION IN PART OR AS A WHOLE  
WITHOUT THE WRITTEN PERMISSION OF  
SEASTROM MANUFACTURING IS  
PROHIBITED.

DIMENSIONS ARE IN INCHES TOLERANCES: FRACTIONAL ± 1/32 ANGULAR: MACH ± 1/2 Deg TWO PLACE DECIMAL    ±.01 THREE PLACE DECIMAL ±.005		NAME	DATE	SEASTROM MFG	
	DRAWN				
	CHECKED			SOLDER LUG	
	ENG APPR.				
	MFG APPR.				
Q.A.					
MATERIAL BRASS, HALF HARD	COMMENTS:			SIZE    DWG. NO. <b>A    5458-2C</b>	
FINISH SEE NOTE 1					
DRAWING IS NOT TO SCALE				REV. -	
				SHEET 1 OF 1	