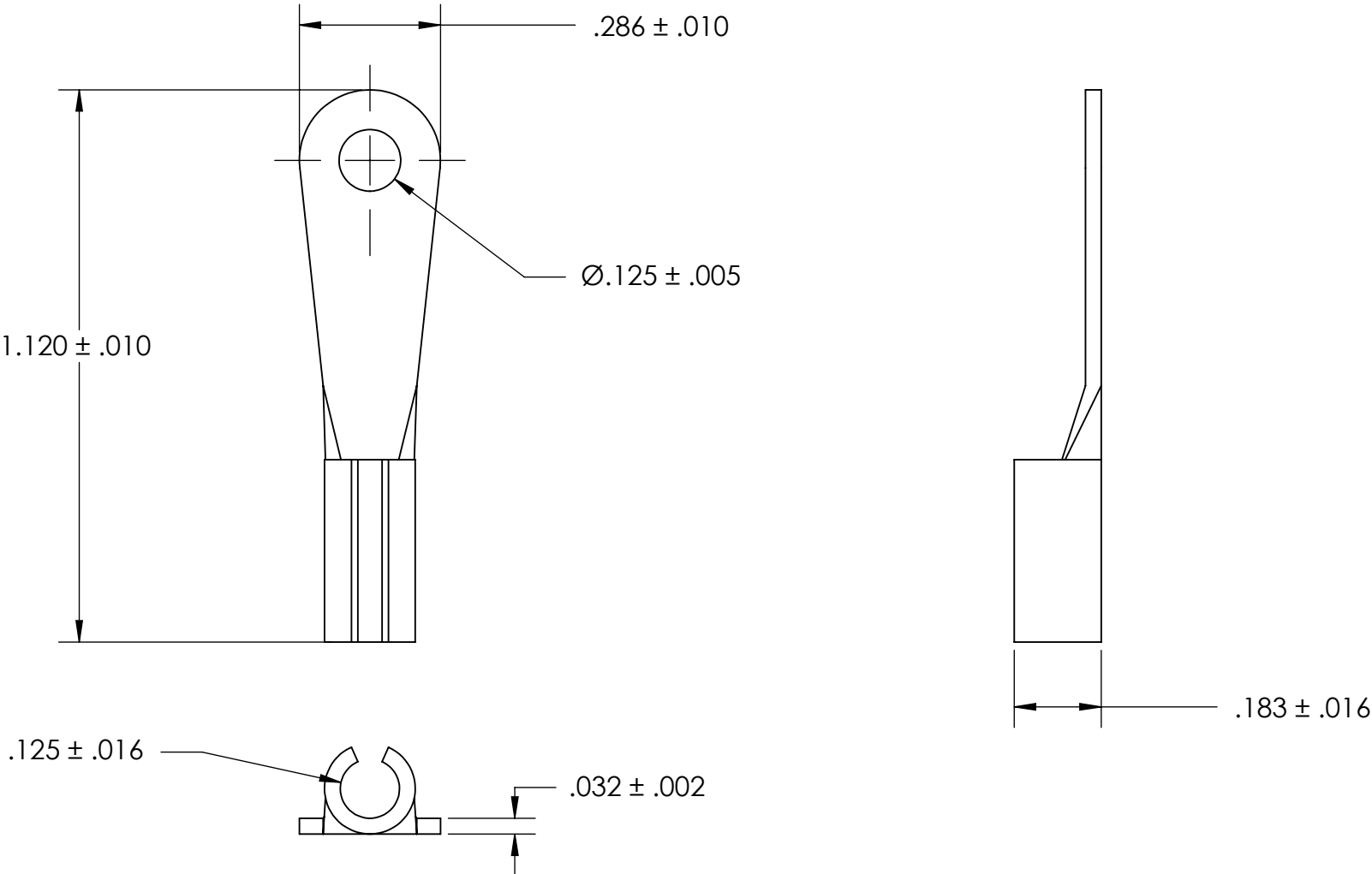


REFEERENCE SEASTROM WORKMANSHIP STD. 8.4.1.W2



- NOTES
- 1. BRIGHT TIN PLATE PER ASTM B545, CLASS B
  - 2. SCREW SIZE: 4
  - 3. DIMENSIONS APPLY PRIOR TO PLATING.

**PROPRIETARY AND CONFIDENTIAL**

THE INFORMATION CONTAINED IN THIS DRAWING IS THE SOLE PROPERTY OF SEASTROM MANUFACTURING. ANY REPRODUCTION IN PART OR AS A WHOLE WITHOUT THE WRITTEN PERMISSION OF SEASTROM MANUFACTURING IS PROHIBITED.

DIMENSIONS ARE IN INCHES TOLERANCES: FRACTIONAL ± 1/32 ANGULAR: MACH ± 1/2 Deg TWO PLACE DECIMAL ±.01 THREE PLACE DECIMAL ±.005		NAME	DATE	SEASTROM MFG  SOLDER LUG			
	DRAWN						
	CHECKED						
	ENG APPR.						
	MFG APPR.						
MATERIAL BRASS, HALF HARD	Q.A.			COMMENTS:			
FINISH SEE NOTE 1							
DRAWING IS NOT TO SCALE							
				SIZE A	DWG. NO. 5458-1C	REV. -	SHEET 1 OF 1