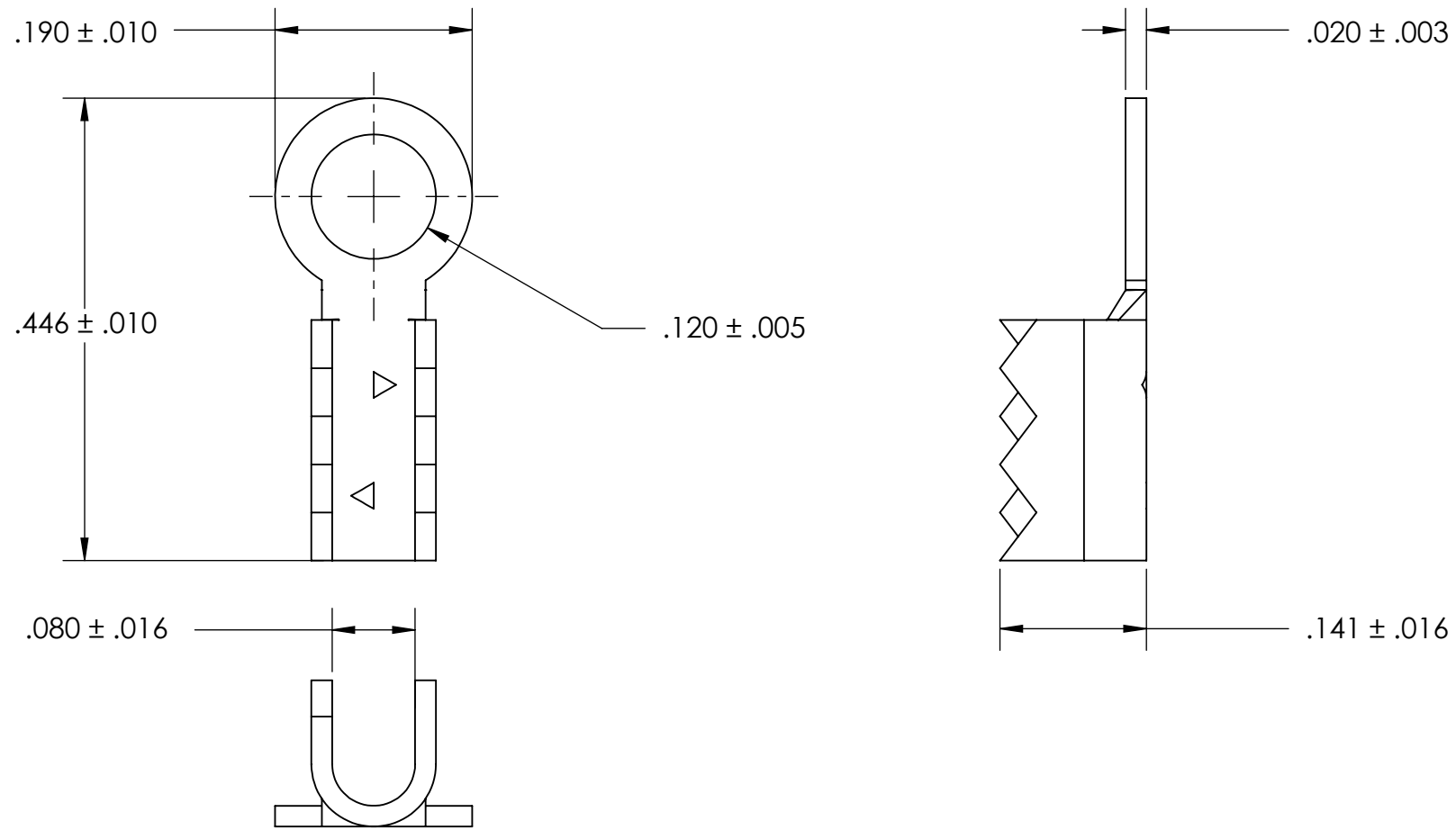


REFEERENCE SEASTROM WORKMANSHIP STD. 8.4.1.W2



- NOTES
- 1. BRIGHT TIN PLATE PER ASTM B545, CLASS B
 - 2. SCREW SIZE: 4
 - 3. DIMENSIONS APPLY PRIOR TO PLATING.

PROPRIETARY AND CONFIDENTIAL

THE INFORMATION CONTAINED IN THIS DRAWING IS THE SOLE PROPERTY OF SEASTROM MANUFACTURING. ANY REPRODUCTION IN PART OR AS A WHOLE WITHOUT THE WRITTEN PERMISSION OF SEASTROM MANUFACTURING IS PROHIBITED.

DIMENSIONS ARE IN INCHES TOLERANCES: FRACTIONAL ± 1/32 ANGULAR: MACH ± 1/2 Deg TWO PLACE DECIMAL ±.01 THREE PLACE DECIMAL ±.005		NAME	DATE	SEASTROM MFG SOLDER LUG		
	DRAWN					
	CHECKED					
	ENG APPR.					
	MFG APPR.					
MATERIAL BRASS, HALF HARD	Q.A.			COMMENTS:		
FINISH SEE NOTE 1						
DRAWING IS NOT TO SCALE						
				SIZE A	DWG. NO. 5451-B	REV. -
				SHEET 1 OF 1		