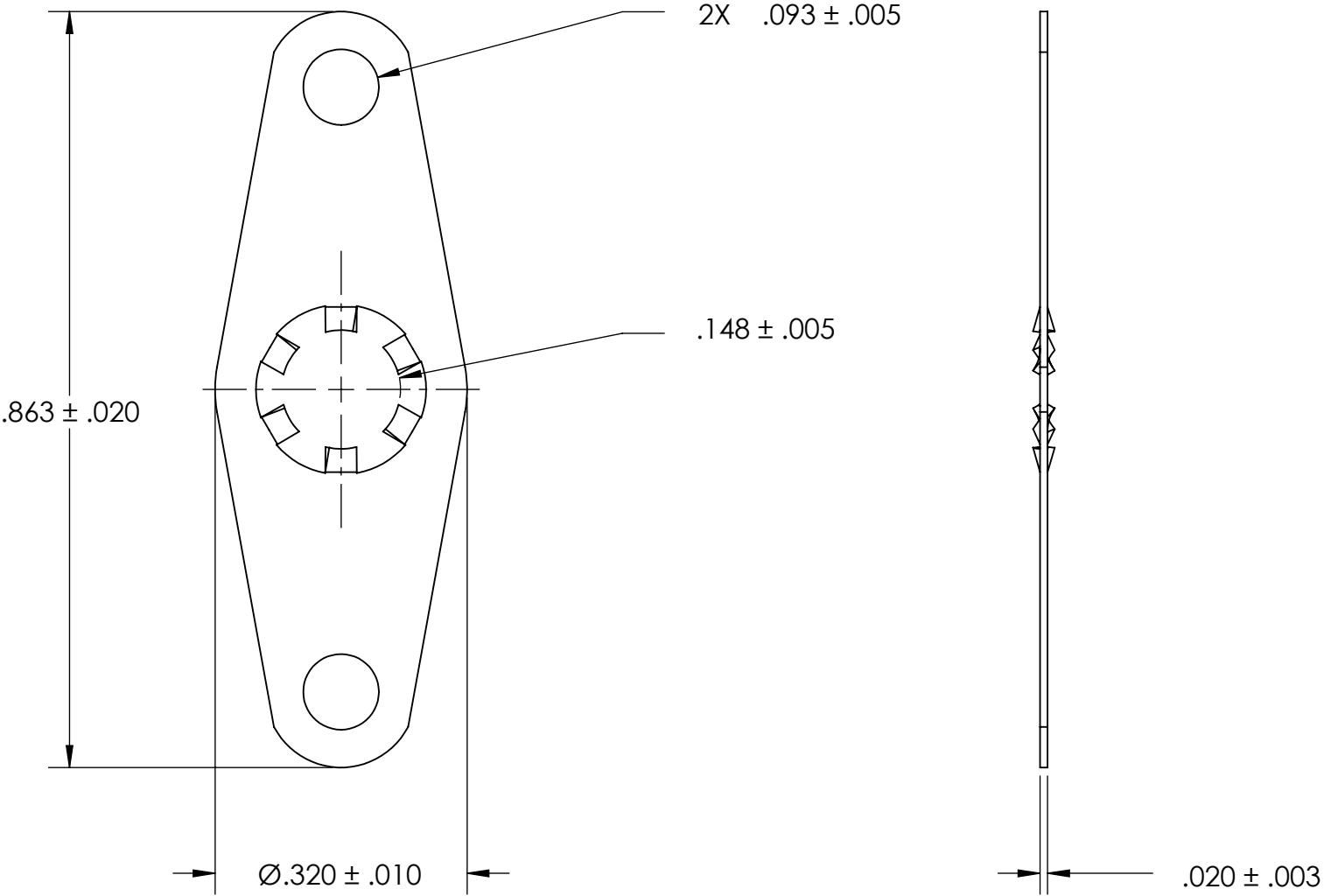


REFEERENCE SEASTROM WORKMANSHIP STD. 8.4.1.W2



- NOTES
- 1. TIN PLATE PER ASTM B545 CLASS B
 - 2. SCREW SIZE 6
 - 3. DIMENSIONS APPLY PRIOR TO PLATING.

PROPRIETARY AND CONFIDENTIAL
THE INFORMATION CONTAINED IN THIS DRAWING IS THE SOLE PROPERTY OF SEASTROM MANUFACTURING. ANY REPRODUCTION IN PART OR AS A WHOLE WITHOUT THE WRITTEN PERMISSION OF SEASTROM MANUFACTURING IS PROHIBITED.

DIMENSIONS ARE IN INCHES TOLERANCES: FRACTIONAL ± 1/32 ANGULAR: MACH ± 1/2 Deg TWO PLACE DECIMAL ±.01 THREE PLACE DECIMAL ±.005		NAME	DATE	SEASTROM MFG SOLDER LUG		
	DRAWN					
	CHECKED					
	ENG APPR.					
	MFG APPR.					
MATERIAL BRASS	Q.A.					
COMMENTS:						
FINISH SEE NOTE 1				SIZE A	DWG. NO. 5444-2	REV. -
DRAWING IS NOT TO SCALE				SHEET 1 OF 1		