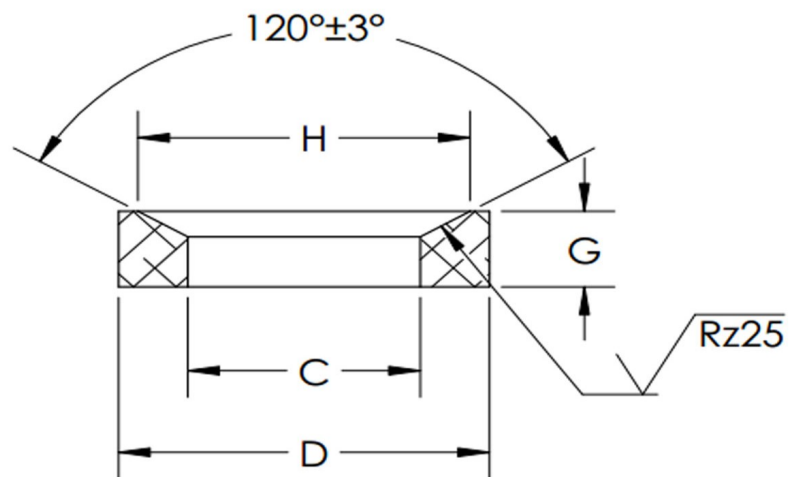


C+/- .2	D+/- .2	H+/- .2	G+/- .1	Screw Size
7.100	17	11	4	M6



SEASTROM MANUFACTURING CO., INC.  
456 SEASTROM STREET  
TWIN FALLS, IDAHO 83301  
(208) 737-4300 FAX (208) 734-7222

ALL INFORMATION  
COPYRIGHTED BY  
SEASTROM MFG. ©

**PART NO.:** 5779-G-M6

**PART NAME:** Washers, Conical Seat

**MATERIAL:** Cold Rolled Steel

**HEAT TREAT:** Please refer to Material & Finish Specifications in Engineering Resources

**FINISH:** Through Hardened(350+80)HV30 (All Dimensions Are Prior To Plating)

Dimensions in Millimeters