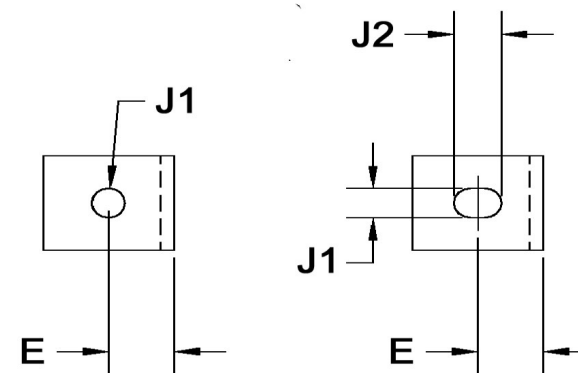
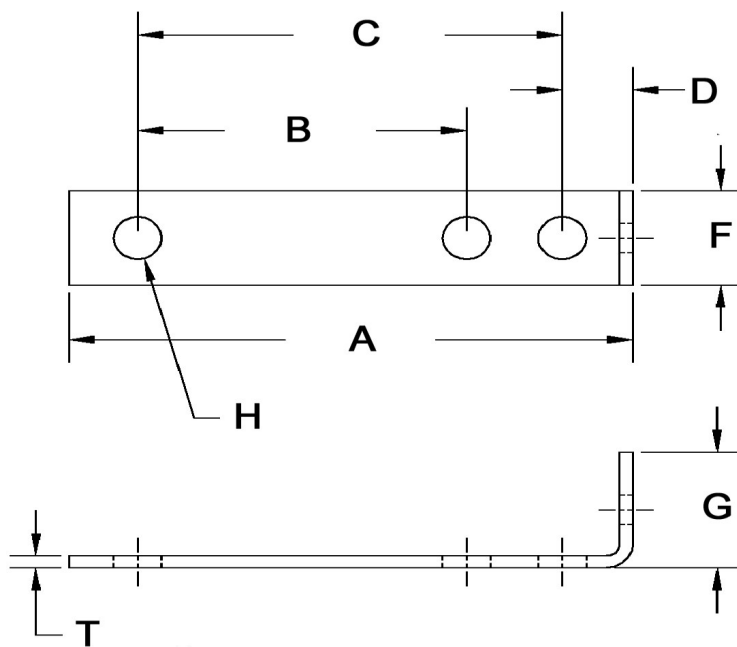


A+/-0.016	B+/-0.01	C+/-0.01	D+/-0.01	E+/-0.01	F+/-0.016	G+/-0.016	H+/-0.005	J1+/-0.005	J2+/-0.005	T+/-0.006
3.125	0	2.250	0.500	0.875	0.750	1.625	0.281	0.281	1	0.125



Dimensions in Inches



SEASTROM MANUFACTURING CO., INC.  
456 SEASTROM STREET  
TWIN FALLS, IDAHO 83301  
(208) 737-4300 FAX (208) 734-7222

ALL INFORMATION  
COPYRIGHTED BY  
SEASTROM MFG. ©

PART NO.: 4925-3

PART NAME: Brackets, Terminal Board

MATERIAL: Cold Rolled Steel

HEAT TREAT: Please refer to Material & Finish Specifications in Engineering Resources

FINISH: Cadmium Type I (All Dimensions Are Prior To Plating)