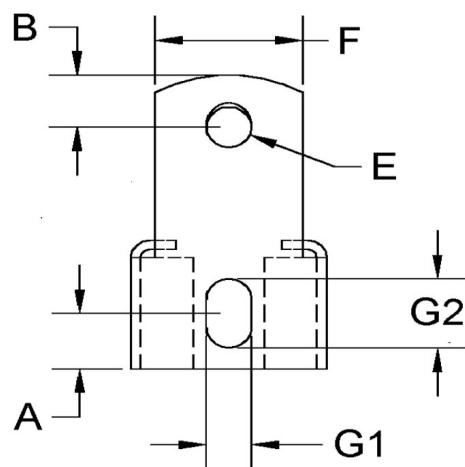
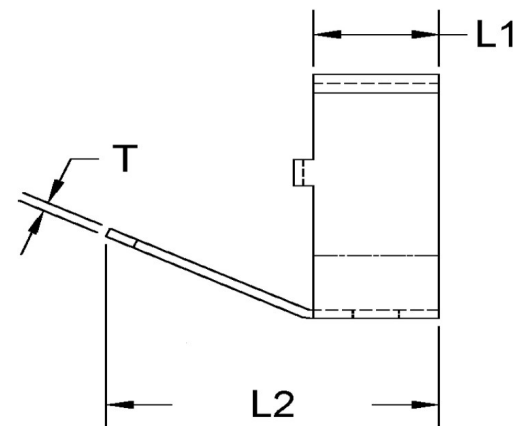
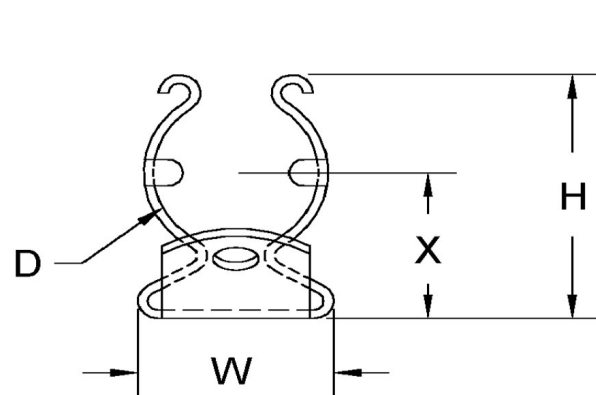


D+/- .015	L1+/- .01	L2+/- .01	T (Stk)+/- .0024	H (Max)	W (Base Max)	X+/- .02	E+/- .003	A+/- .005	B+/- .005	F+/- .01	G1+/- .005	G2+/- .005
1	0.500	1.215	0.040	1.250	0.890	0.775	0.185	0.250	0.196	0.730	0.203	0.312



**NOTE:**

ALL DIMENSIONS ARE TO BE MEASURED WITH THE SPRING CLIP SECURED TO A FLAT SURFACE AND A COMPONENT OF THE NOMINAL DIAMETER IN PLACE.



SEASTROM MANUFACTURING CO., INC.  
456 SEASTROM STREET  
TWIN FALLS, IDAHO 83301  
(208) 737-4300 FAX (208) 734-7222

ALL INFORMATION  
COPYRIGHTED BY  
SEASTROM MFG.



**PART NO.:** 4570-100-124-2

**PART NAME:** Spring Clips 35

**MATERIAL:** Spring Steel

**HEAT TREAT:** Please refer to Material & Finish Specifications in Engineering Resources

**FINISH:** None

Dimensions in Inches