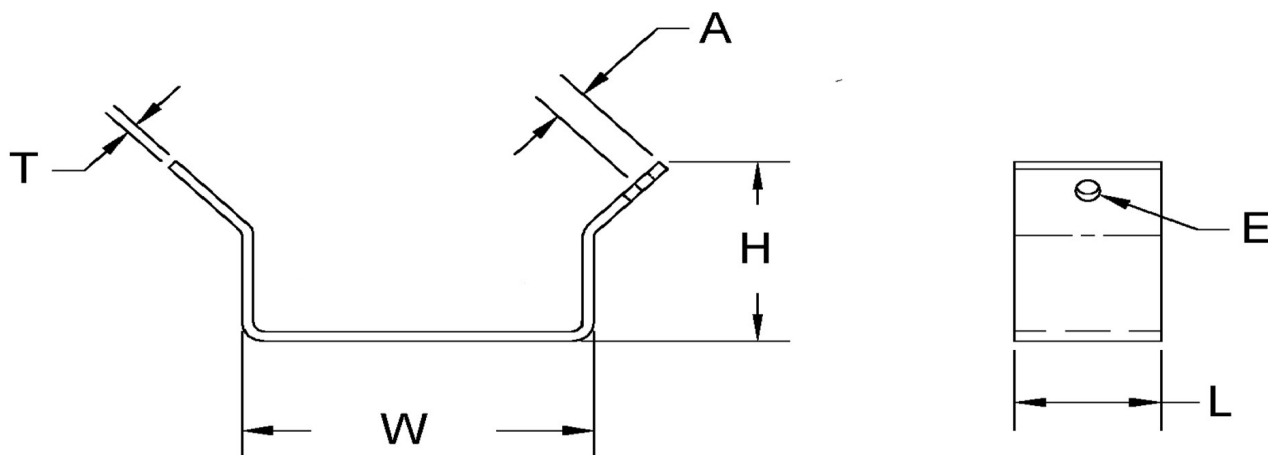


| D1 (Comp Size)+/-0.015 | D2 (Comp Size)+/-0.015 | L+/-0.01 | T (Stk)+/-0.002 | H (Max) | W (Base Max) | A+/-0.005 | E+/-0.003 |
|------------------------|------------------------|----------|-----------------|---------|--------------|-----------|-----------|
| 1.300                  | 1                      | 0.380    | 0.032           | 0.955   | 1.375        | 0.252     | 0.125     |



**NOTE:**

ALL DIMENSIONS ARE TO BE MEASURED WITH THE SPRING CLIP SECURED TO A FLAT SURFACE AND A COMPONENT OF THE NOMINAL DIAMETER IN PLACE.

Dimensions in Inches



SEASTROM MANUFACTURING CO., INC.  
456 SEASTROM STREET  
TWIN FALLS, IDAHO 83301  
(208) 737-4300 FAX (208) 734-7222

ALL INFORMATION  
COPYRIGHTED BY  
SEASTROM MFG.



**PART NO.:** 4557-130X100-38-2

**PART NAME:** Spring Clips 17

**MATERIAL:** Spring Steel

**HEAT TREAT:** Please refer to Material & Finish Specifications in Engineering Resources

**FINISH:** None