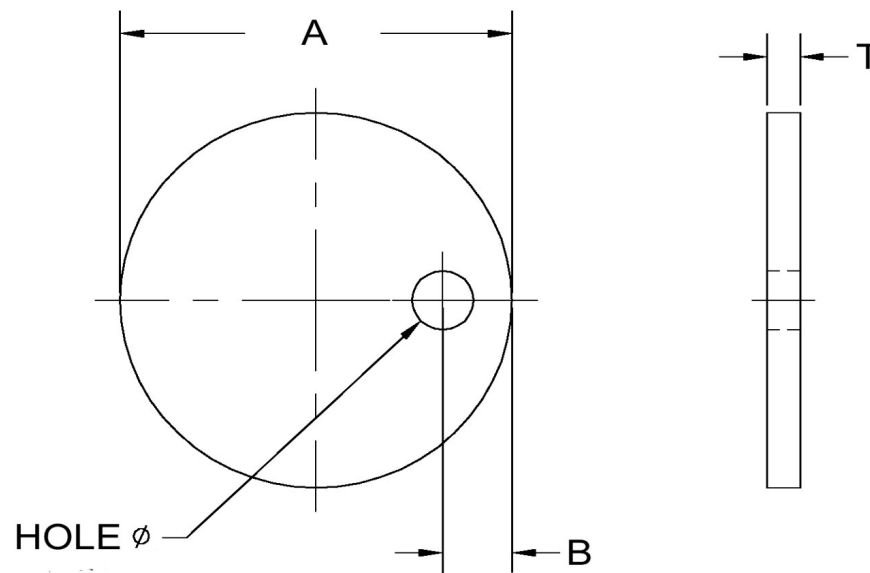


Hole Dia+/-0.005	A+/-0.01	B+/-0.01	T+/-0.003	Screw Size
0.167	0.940	0.156	0.030	8



Dimensions in Inches



SEASTROM MANUFACTURING CO., INC.
456 SEASTROM STREET
TWIN FALLS, IDAHO 83301
(208) 737-4300 FAX (208) 734-7222

ALL INFORMATION
COPYRIGHTED BY
SEASTROM MFG. ©

PART NO.:	2810-18-C2
PART NAME:	Clamps, Hold Down
MATERIAL:	Cold Rolled Steel
HEAT TREAT:	Please refer to Material & Finish Specifications in Engineering Resources
FINISH:	Cadmium Type II (All Dimensions Are Prior To Plating)