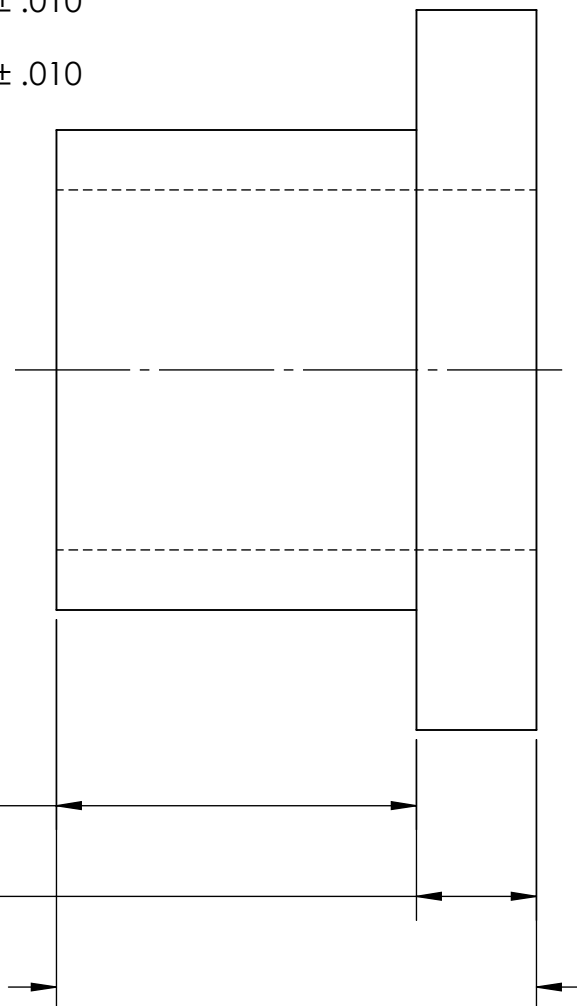


Ø.117 ± .005

Ø.137 ± .010

Ø.250 ± .010



.035 ± .005

.060 ± .015

(.095)

NOTES

1. NONE
2. R.010 MAX RADII OR CHAMFER FOR ALL CORNERS (6X)
3. DUE TO THE NATURE OF THE MATERIAL AND WALL THICKNESS SOME IMPERFECTION AND/OR MISSING PIECES IN THE SHOULDER PERMISSIBLE.

PROPRIETARY AND CONFIDENTIAL

THE INFORMATION CONTAINED IN THIS DRAWING IS THE SOLE PROPERTY OF SEASTROM MANUFACTURING. ANY REPRODUCTION IN PART OR AS A WHOLE WITHOUT THE WRITTEN PERMISSION OF SEASTROM MANUFACTURING IS PROHIBITED.

DIMENSIONS ARE IN INCHES
TOLERANCES:
FRACTIONAL ± 1/32
ANGULAR: MACH ± 1/2 Deg
TWO PLACE DECIMAL ± .01
THREE PLACE DECIMAL ± .005

MATERIAL
FIBERGLASS

FINISH
SEE NOTE 1

DRAWING IS NOT TO SCALE

	NAME	DATE
DRAWN		
CHECKED		
ENG APPR.		
MFG APPR.		
Q.A.		
COMMENTS:		

SEASTROM MFG

SHOULDER WASHER

SIZE A	DWG. NO. 5603-16	REV. -
------------------	---------------------	-----------

SHEET 1 OF 1