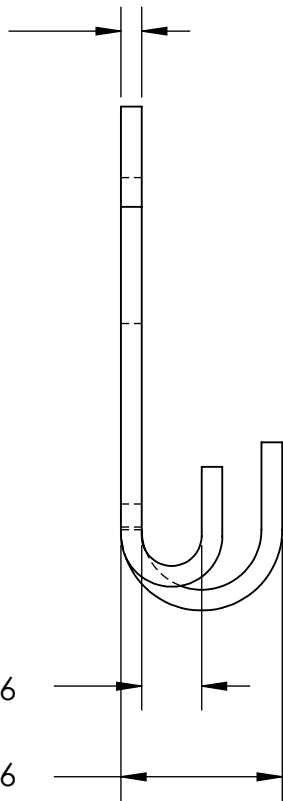


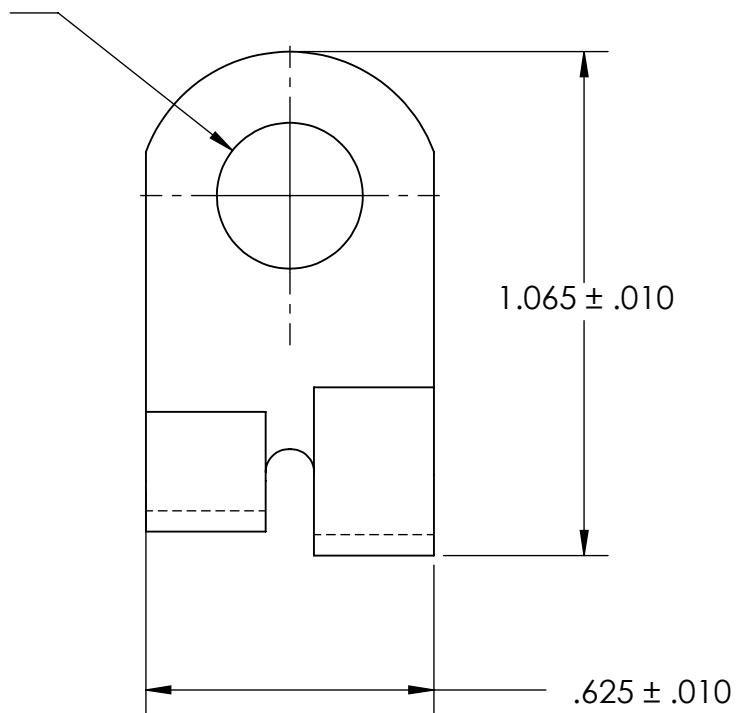
.040 ± .004



.221 ± .016

.380 ± .016

Ø.267 ± .005



1.065 ± .010

.625 ± .010

NOTES

- 1. TIN PLATE PER ASTM B545 CLASS B
- 2. WIRE SIZE: 6-8
- 3. SCREW SIZE: 1/4
- 4. DIMENSIONS APPLY PRIOR TO PLATING.

PROPRIETARY AND CONFIDENTIAL

THE INFORMATION CONTAINED IN THIS DRAWING IS THE SOLE PROPERTY OF SEASTROM MANUFACTURING. ANY REPRODUCTION IN PART OR AS A WHOLE WITHOUT THE WRITTEN PERMISSION OF SEASTROM MANUFACTURING IS PROHIBITED.

DIMENSIONS ARE IN INCHES TOLERANCES: FRACTIONAL ± 1/32 ANGULAR: MACH ± 1/2 Deg TWO PLACE DECIMAL ± .01 THREE PLACE DECIMAL ± .005	NAME	DATE	SEASTROM MFG	
	DRAWN			
	CHECKED		SOLDER LUG	
	ENG APPR.			
	MFG APPR.			
MATERIAL BRASS	Q.A.		SIZE A	DWG. NO. 5461-3B
FINISH SEE NOTE 1	COMMENTS:		REV. -	
DRAWING IS NOT TO SCALE			SHEET 1 OF 1	